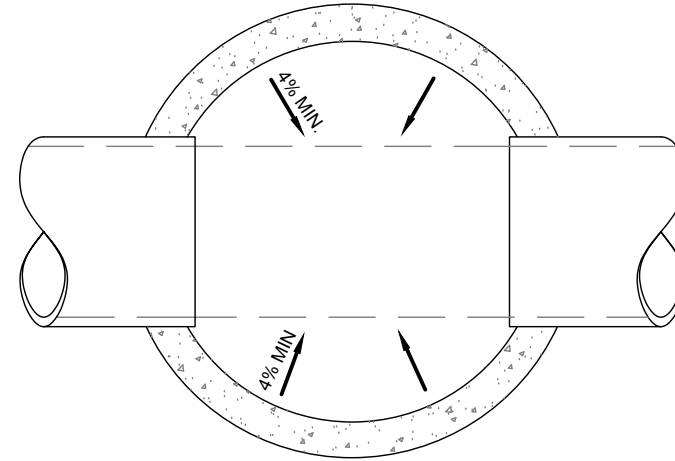
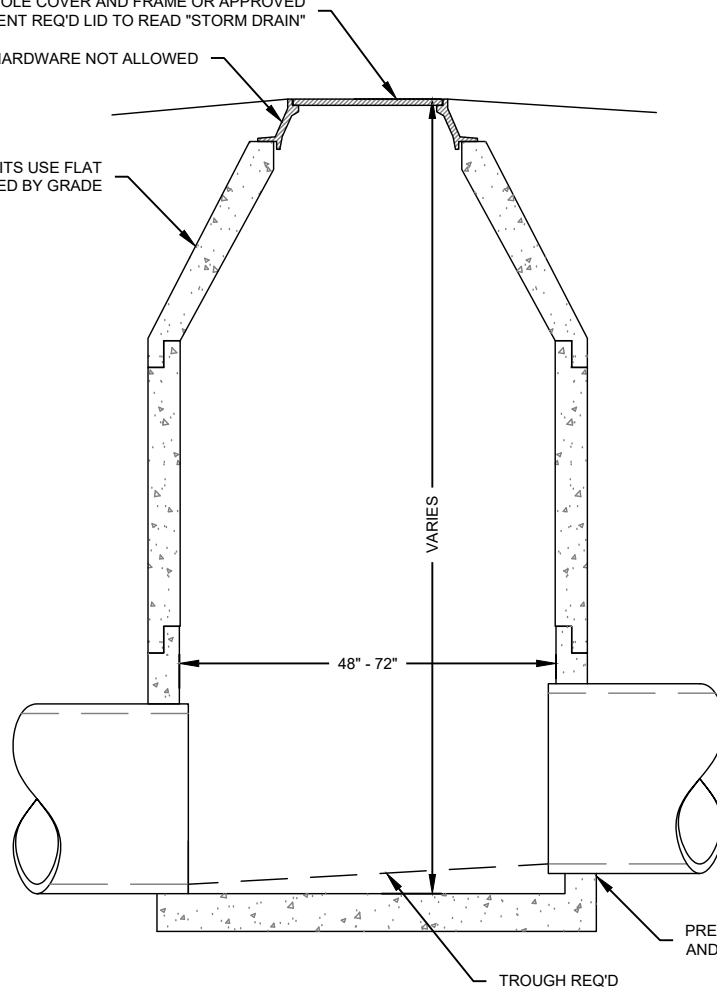


D&L A-1180 SOLID MANHOLE COVER AND FRAME OR APPROVED
EQUIVALENT REQ'D LID TO READ "STORM DRAIN"

REVERSIBLE HARDWARE NOT ALLOWED

USE CONE IF GRADE PERMITS USE FLAT
LID IF REQUIRED BY GRADE



SECTION THROUGH MANHOLE

PRECAST MANHOLE CONE
AND SECTIONS REQ'D

TROUGH REQ'D

NOTES:

- 1. PRECAST MANHOLE CONE AND SECTIONS TO MEET AASHTO HS-20 LOADING SPECIFICATION.

Z:\DS_ENG\DETAILS\2023 DETAILS\2023 Storm Details.dwg



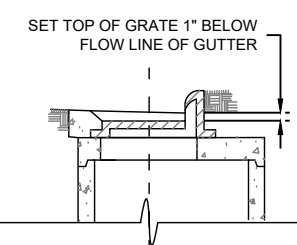
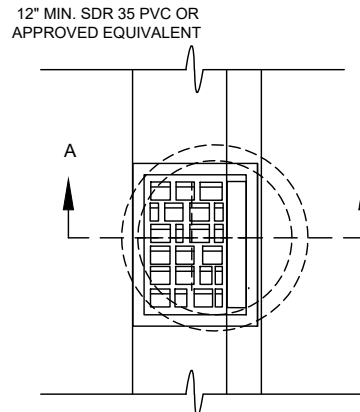
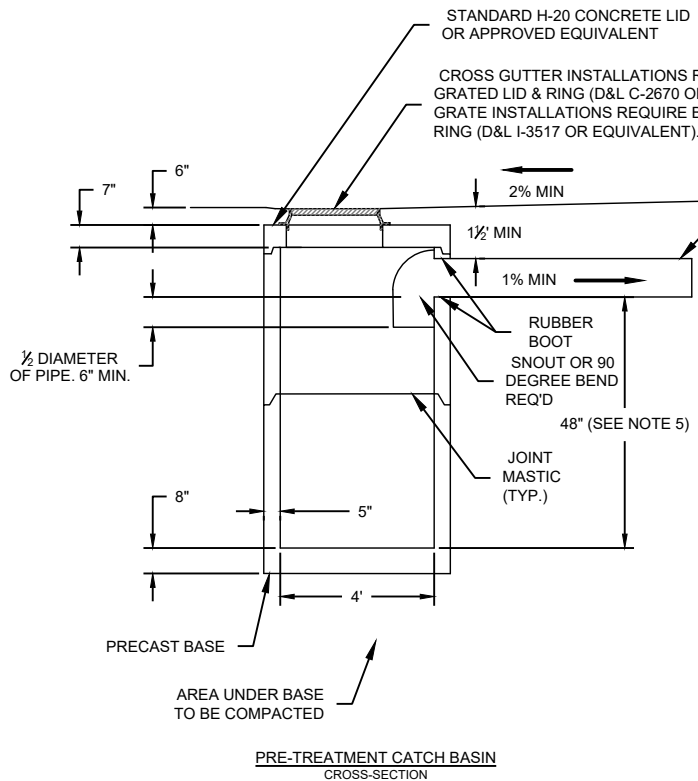
CONSTRUCTION STANDARD
DRAWINGS

CITY OF OREM

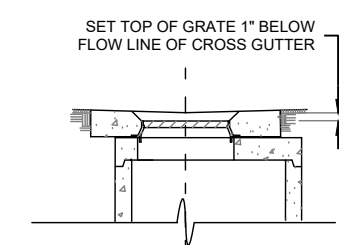
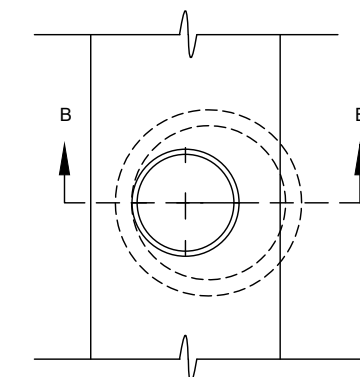
48" - 72" PRECAST STORM DRAIN
MANHOLE

REV. 4/2024

SD-1



CURB & GUTTER SECTION A-A



CROSS GUTTER SECTION B-B

NOTES:

1. MANHOLE BASE AND ALL SECTIONS SHALL BE PRECAST TO CONFORM TO ASTM C478.
2. THE PRE-TREATMENT MANHOLE SHALL BE CONSTRUCTED TO ENSURE WATER TIGHTNESS.
3. ANY APPROVED EQUIVALENTS REQUIRE CITY ENGINEER'S WRITTEN APPROVAL.
4. SNOUTS ARE ALLOWED. INSTALL AS PER MANUFACTURERS RECOMMENDATIONS.
5. FOR PRE-TREATMENT OUTLET DIAMETER PIPE 21" AND LARGER, DEPTH = 2.5 TIMES THE DIAMETER. DEPTH IS DISTANCE BELOW THE OUTLET FLOW LINE AND THE BOTTOM OF THE PRE-TREATMENT STRUCTURE.

Z:\DS_ENG\DETAILS\2023 DETAILS\2023 Storm Details.dwg



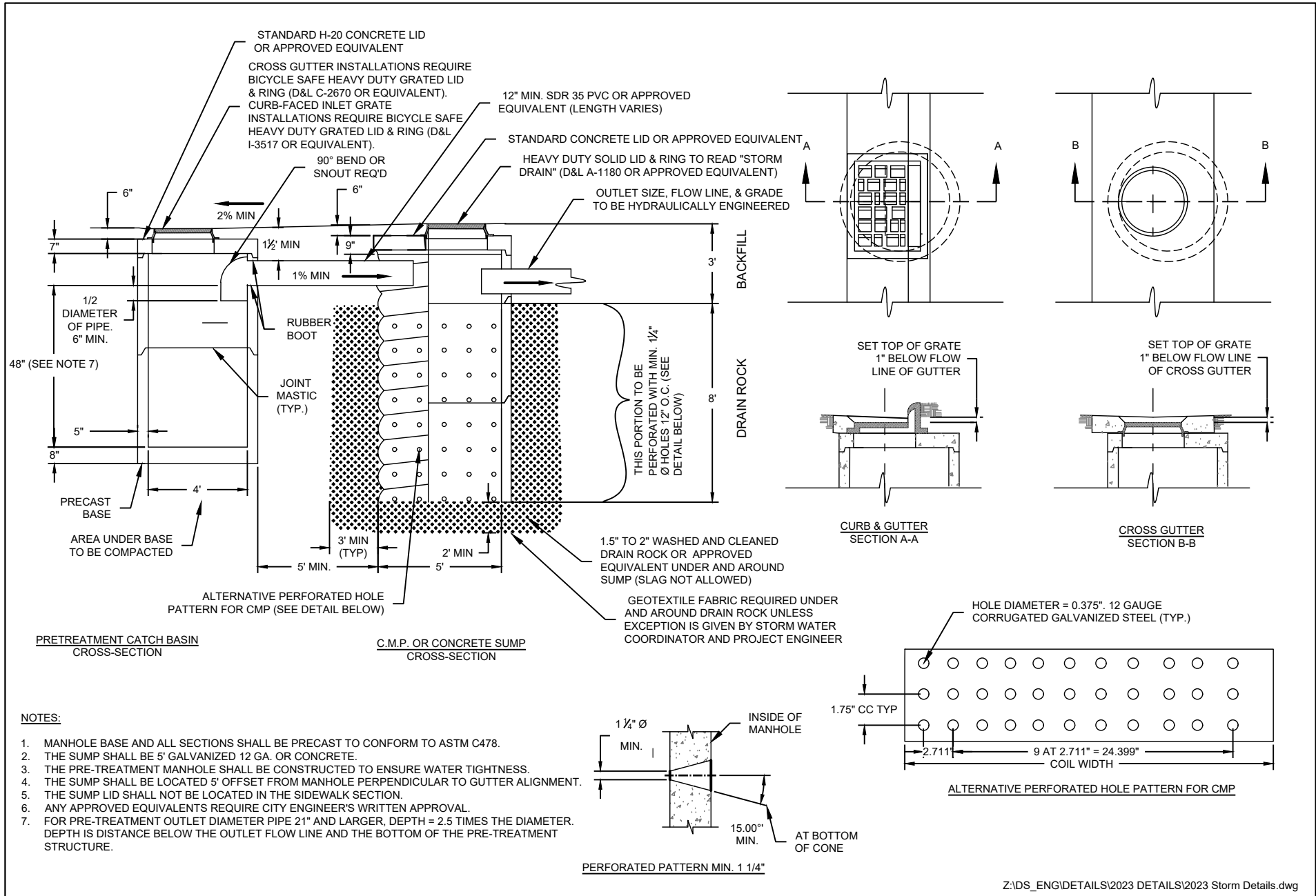
CONSTRUCTION STANDARD DRAWINGS

CITY OF OREM

PRE-TREATMENT CATCH BASIN

REV. 4/2024

SD-2



NOTES:

1. MANHOLE BASE AND ALL SECTIONS SHALL BE PRECAST TO CONFORM TO ASTM C478.
2. THE SUMP SHALL BE 5' GALVANIZED 12 GA. OR CONCRETE.
3. THE PRE-TREATMENT MANHOLE SHALL BE CONSTRUCTED TO ENSURE WATER TIGHTNESS.
4. THE SUMP SHALL BE LOCATED 5' OFFSET FROM MANHOLE PERPENDICULAR TO GUTTER ALIGNMENT.
5. THE SUMP LID SHALL NOT BE LOCATED IN THE SIDEWALK SECTION.
6. ANY APPROVED EQUIVALENTS REQUIRE CITY ENGINEER'S WRITTEN APPROVAL.
7. FOR PRE-TREATMENT OUTLET DIAMETER PIPE 21" AND LARGER, DEPTH = 2.5 TIMES THE DIAMETER. DEPTH IS DISTANCE BELOW THE OUTLET FLOW LINE AND THE BOTTOM OF THE PRE-TREATMENT STRUCTURE.

Z:\DS_ENG\DETAILS\2023 DETAILS\2023 Storm Details.dwg



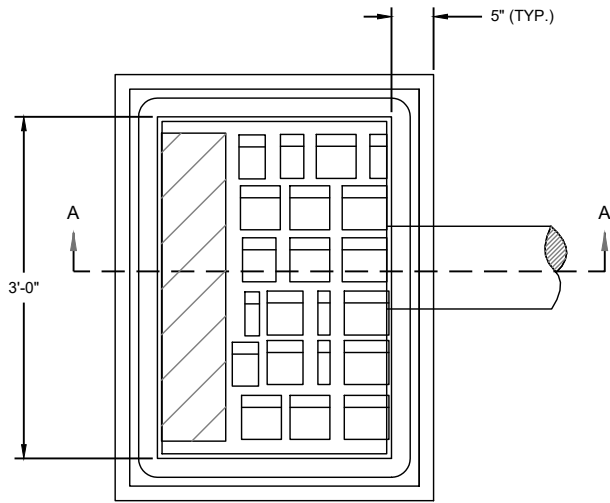
CONSTRUCTION STANDARD DRAWINGS

CITY OF OREM

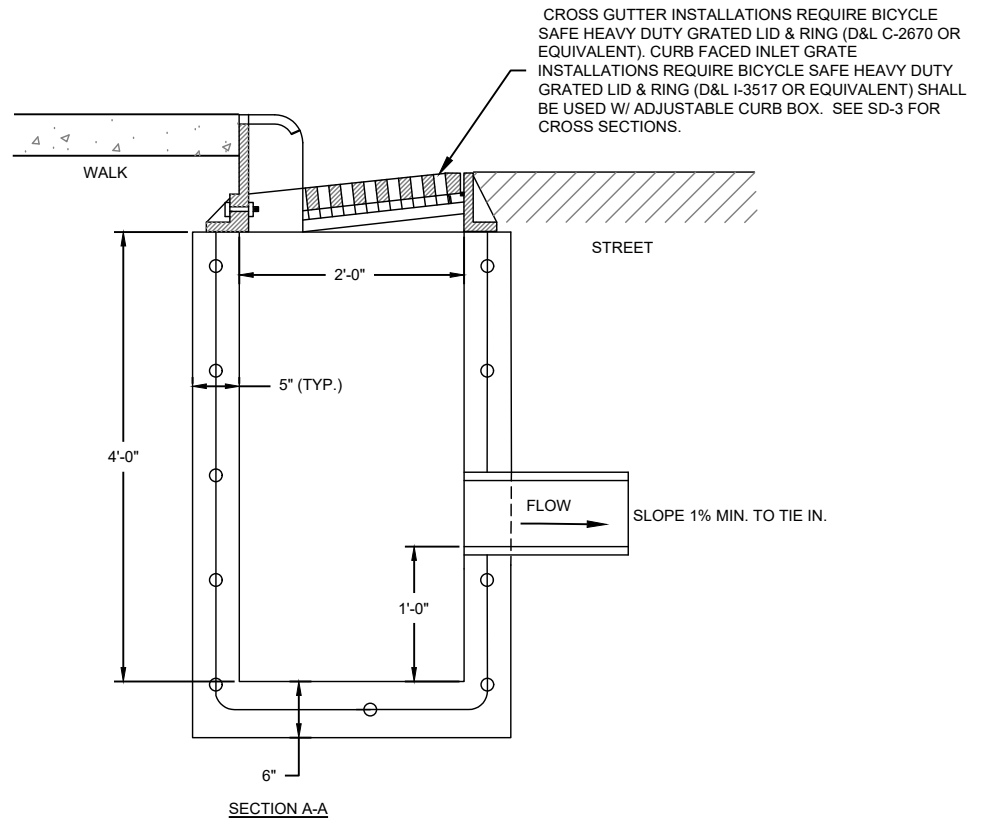
PRE-TREATMENT CATCH BASIN & SUMP

REV. 4/2024

SD-3



PLAN VIEW



SECTION A-A

NOTES:

1. REBAR #4 BARS SPACED A MAX 14" O.C. HORIZ. AND VERT. 14" OVER LAP ON REBAR REQUIRED.

Z:\DS_ENG\DETAILS\2023 DETAILS\2023 Storm Details.dwg



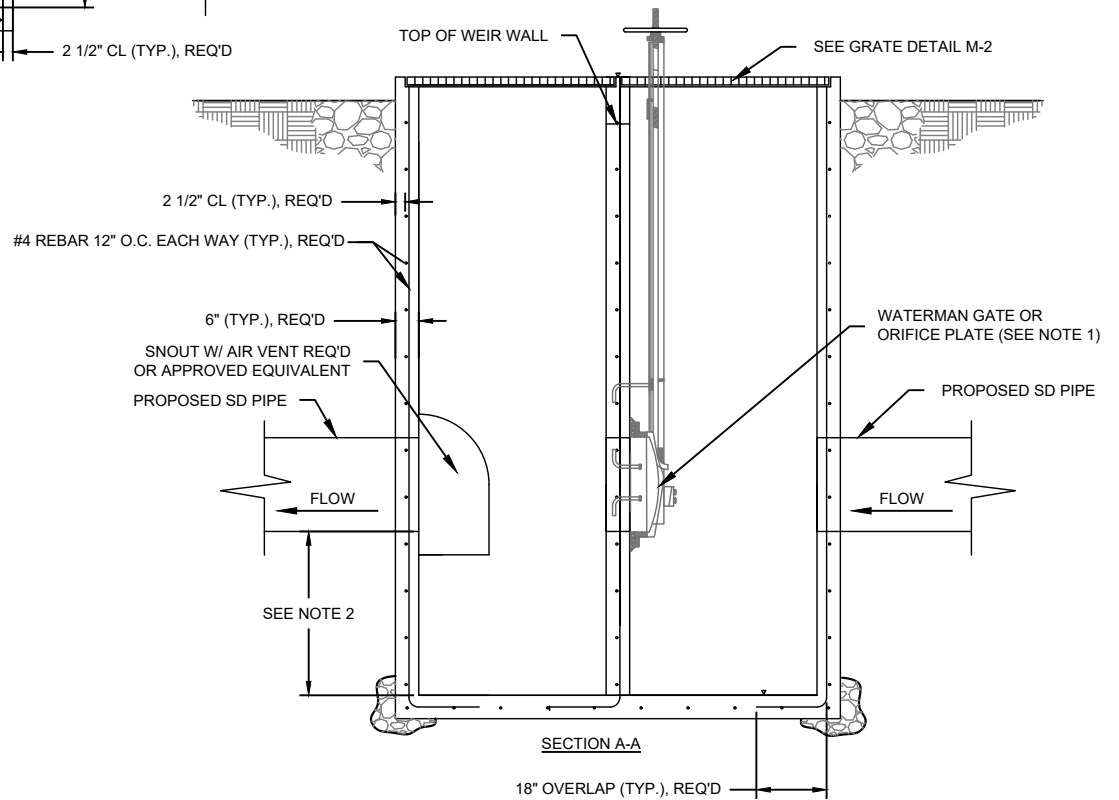
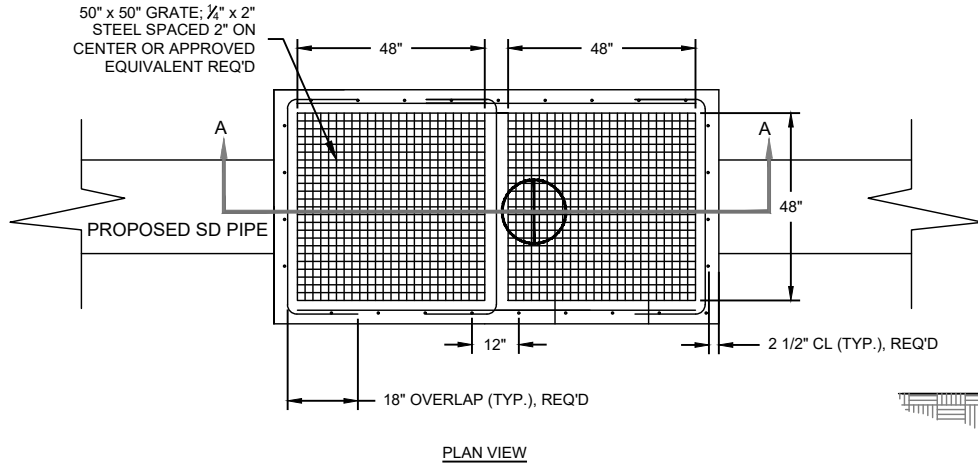
CONSTRUCTION STANDARD
DRAWINGS

CITY OF OREM

STANDARD CATCH BASIN

REV. 4/2024

SD-4



NOTES:

1. ORIFICE PLATE SHALL BE GALVANIZED OR STAINLESS STEEL WITH MINIMUM THICKNESS OF 1/4". ORIFICE PLATE SIZE AND ELEVATION WILL VARY BASED ON DESIGN.
2. FOR PRE-TREATMENT OUTLET DIAMETER PIPE 21" AND LARGER, DEPTH = 2.5 TIMES THE DIAMETER. DEPTH IS DISTANCE BELOW THE OUTLET FLOW LINE AND THE BOTTOM OF THE PRE-TREATMENT STRUCTURE.

Z:\DS_ENG\DETAILS\2023 DETAILS\2023 Storm Details.dwg



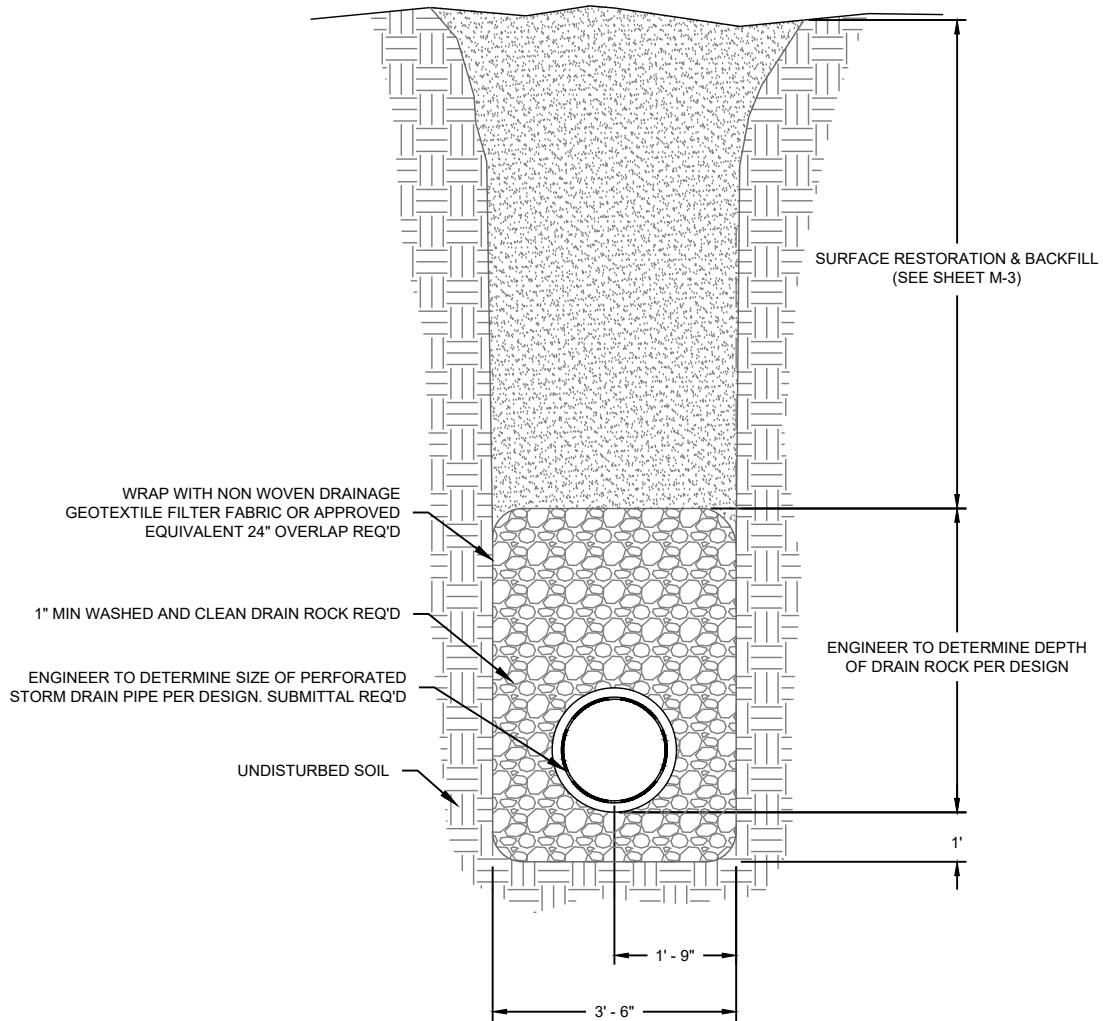
CONSTRUCTION STANDARD
DRAWINGS

CITY OF OREM

OUTLET CONTROL STRUCTURE

REV. 4/2024

SD-5



Z:\IDS_ENG\DETAILS\2023 DETAILS\2023 Storm Details.dwg



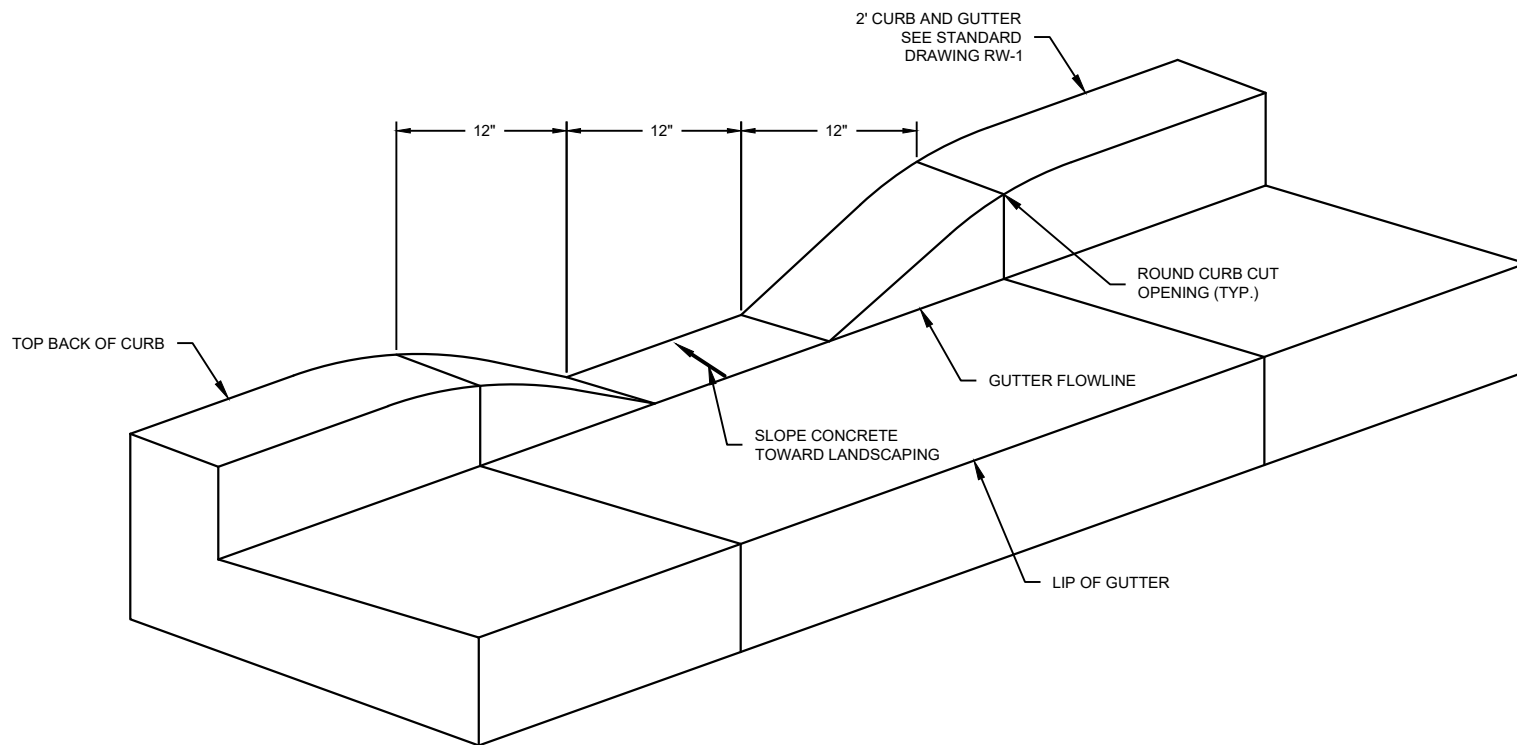
CONSTRUCTION STANDARD
DRAWINGS

CITY OF OREM

GROUNDWATER TRENCH

REV. 4/2024

SD-6



NOTES:

1. LANDSCAPING ADJACENT TO CURB CUT IS TO BE INSTALLED 2" BELOW AND SLOPED AWAY FROM CURB CUT TO PREVENT BLOCKAGE.

Z:\DS_ENG\DETAILS\2023 DETAILS\2023 Storm Details.dwg



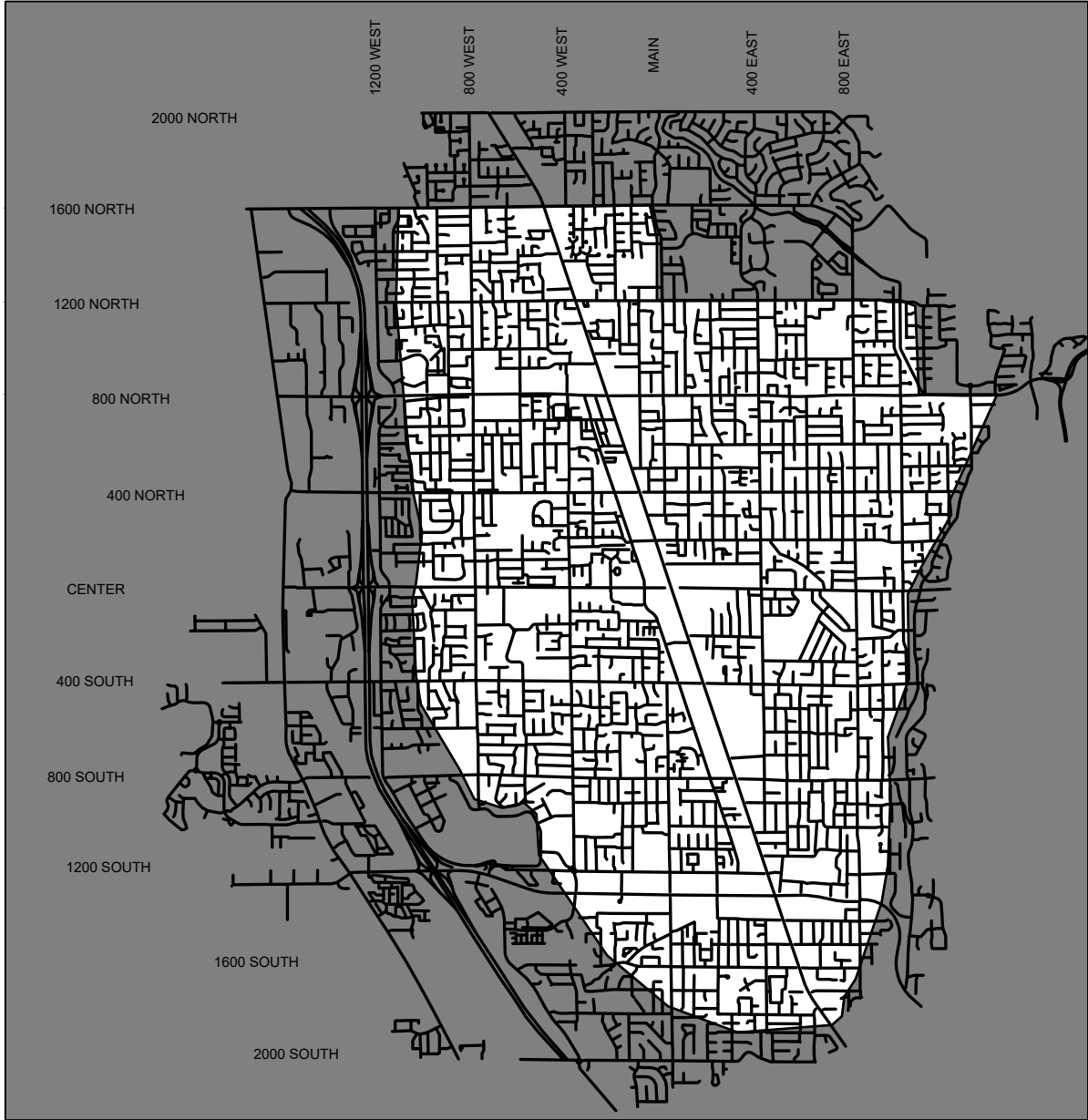
CONSTRUCTION STANDARD
DRAWINGS


CITY OF OREM

CURB CUT

REV. 4/2024

SD-7




 POOR PERCOLATION AREA

- NOTES:**
- SUMPS MAY ONLY BE USED IF THE CITY ENGINEER APPROVES SUMPS BASED ON SOILS REPORTS W/ PERCOLATION RATES.

Z:\DS_ENG\DETAILS\2023 DETAILS\2023 Storm Details.dwg

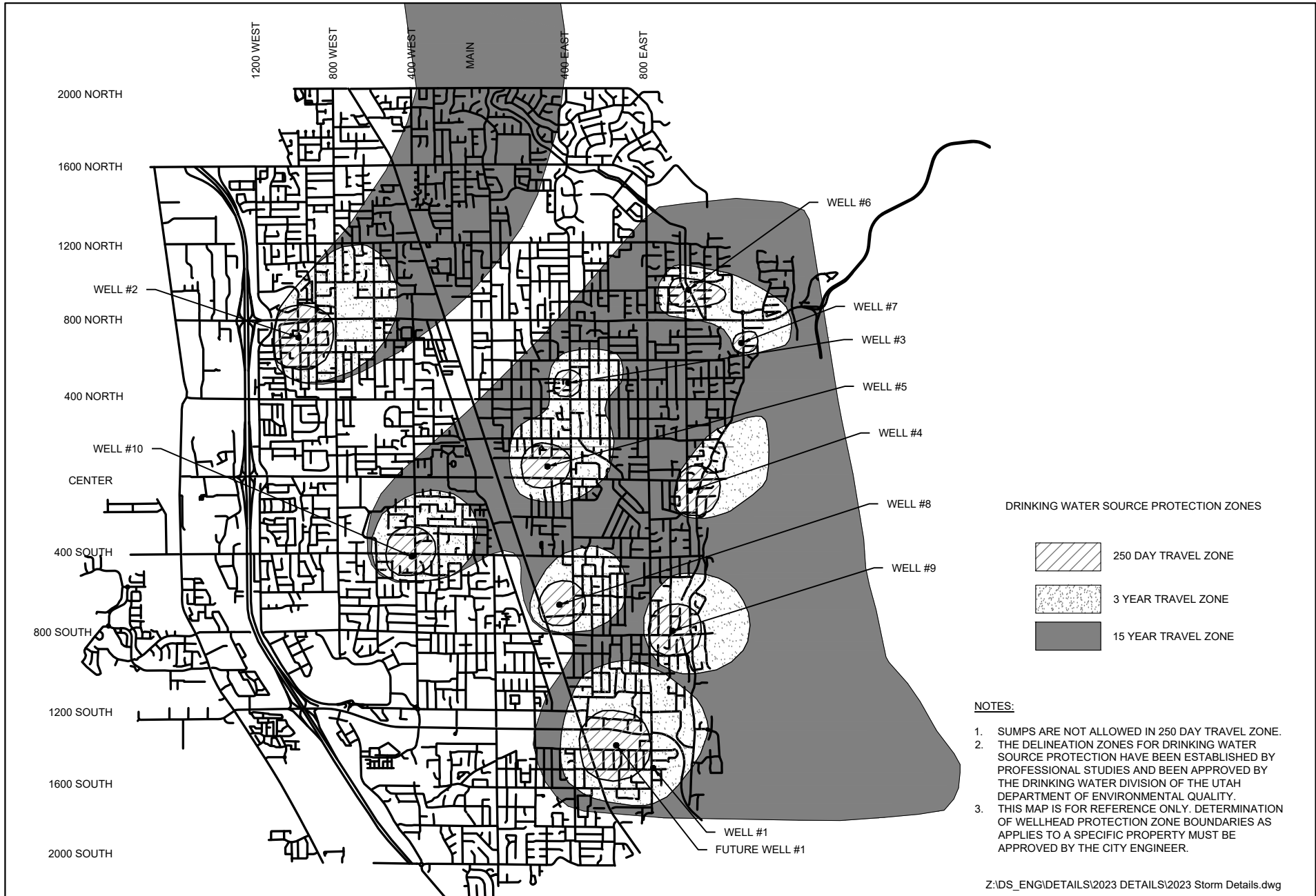


CONSTRUCTION STANDARD
DRAWINGS

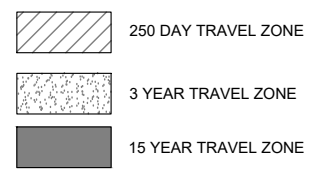
CITY OF OREM

POOR PERCOLATION MAP

REV. 4/2024
SD-8



DRINKING WATER SOURCE PROTECTION ZONES



NOTES:

1. SUMPS ARE NOT ALLOWED IN 250 DAY TRAVEL ZONE.
2. THE DELINEATION ZONES FOR DRINKING WATER SOURCE PROTECTION HAVE BEEN ESTABLISHED BY PROFESSIONAL STUDIES AND BEEN APPROVED BY THE DRINKING WATER DIVISION OF THE UTAH DEPARTMENT OF ENVIRONMENTAL QUALITY.
3. THIS MAP IS FOR REFERENCE ONLY. DETERMINATION OF WELLHEAD PROTECTION ZONE BOUNDARIES AS APPLIES TO A SPECIFIC PROPERTY MUST BE APPROVED BY THE CITY ENGINEER.

Z:\DS_ENG\DETAILS\2023 DETAILS\2023 Storm Details.dwg



CONSTRUCTION STANDARD DRAWINGS

CITY OF OREM

DRINKING WATER SOURCE PROTECTION ZONES

REV. 4/2024
SD-9